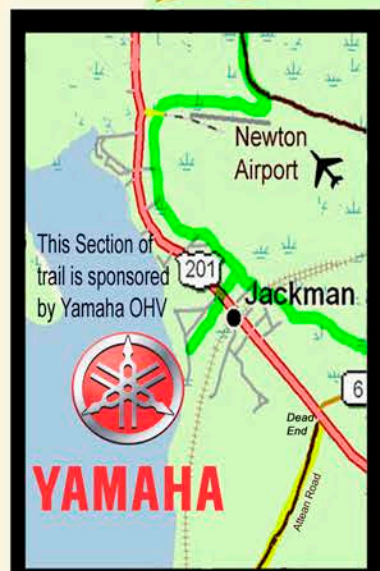


# Welcome to Jackman, Maine USA

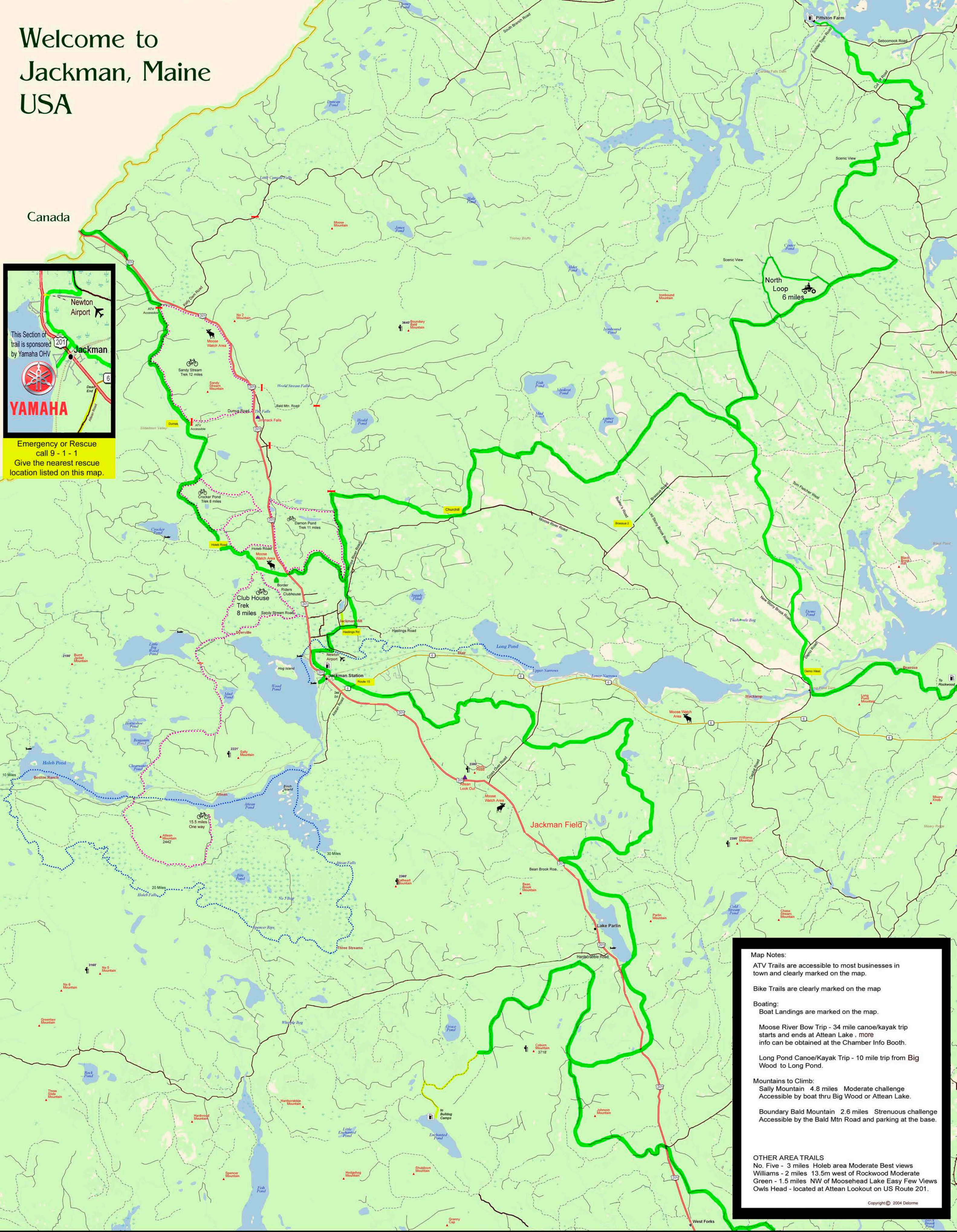
Canada



This Section of trail is sponsored by Yamaha OHV



Emergency or Rescue call 9 - 1 - 1 Give the nearest rescue location listed on this map.



**Map Notes:**  
 ATV Trails are accessible to most businesses in town and clearly marked on the map.  
 Bike Trails are clearly marked on the map  
 Boating:  
 Boat Landings are marked on the map.  
 Moose River Bow Trip - 34 mile canoe/kayak trip starts and ends at Attean Lake - more info can be obtained at the Chamber Info Booth.  
 Long Pond Canoe/Kayak Trip - 10 mile trip from Big Wood to Long Pond.  
 Mountains to Climb:  
 Sally Mountain 4.8 miles Moderate challenge Accessible by boat thru Big Wood or Attean Lake.  
 Boundary Bald Mountain 2.6 miles Strenuous challenge Accessible by the Bald Mtn Road and parking at the base.  
 OTHER AREA TRAILS  
 No. Five - 3 miles Holeb area Moderate Best views  
 Williams - 2 miles 13.5m west of Rockwood Moderate  
 Green - 1.5 miles NW of Moosehead Lake Easy Few Views  
 Owls Head - located at Attean Lookout on US Route 201.

Copyright © 2004 Delorme

Legend	Symbols
ATV Trail	Airport
ATV Access Route	Boat Landing
Boat/Canoe Route	Hiking Area
Bike Trail	Moose Watch Area
US Highway	Mountain Range
Other Town Road	Scenic View
Gate	Rescue Location

The publisher, supporting clubs, advertisers, property owners, or any other parties contributing to the development of this map accept no responsibility as to whether the trails shown are open to the public nor to the condition thereof. They also assume no responsibility for any accidents that should happen while riding these trails. Due to nature, and the use of privately owned land, all trails are subject to change.



Estimated Trail Distances from downtown Jackman:

The Forks	40
Rockwood	40
Bingham	100
Greenville	100
Canada	25
Bulldog	20
Pittston Farm	60

Most of this trail system is over private land. Please respect land owners rights. Remember to stay on maked trails, especially in residential areas and carry out what you carry in!

**Thank you to all the land owners, and foresters who make our trail system possible.**